

# MINTAWON GUESTHOUSE

Near Kpatawee Waterfall  
Suakoko District, Bong County

Cell#: +231 (0) 777333447 / (0) 777333557

Email: [mintawon2020@gmail.com](mailto:mintawon2020@gmail.com)

Facebook: [www.facebook.com/mintawonfarm](https://www.facebook.com/mintawonfarm)

Website: [www.mintawon.farm](http://www.mintawon.farm)



**External View of Mintawon Guesthouse**



## Mintawon Guesthouse

Mintawon Guesthouse is a newly established accommodation service at the heart of the UNESCO-designated heritage and tourism site of Kpatawee Waterfalls, just 10 miles from the Phebe Hospital Junction. It is situated in the rolling hills of the Bong Range. Mintawon Guesthouse, a fabulous 3-wing U-shaped building, fits seamlessly into the surrounding environment, with an eco-friendly fencing. It occupies 5 acres of the Mintawon farmland.

Mintawon Guesthouse is an all-purpose destination. Surrounded by flat plains rising up to gentle hills and the slopes of the Bong Range, it also has other features. The natural lagoon that separates Mintawon from the closest neighboring town, the gentle hills, grassy plains and the soothing rhythmic sounds of the nearby Kpatawee Falls makes Mintawon an endearing haven of tranquility in an undisturbed natural setting.

The weather at Mintawon is mild with light humidity during the day and cool at night. October to February is the coolest time of the year, with fog descending at Mintawon from early to late morning hours. Mintawon usually leaves lasting positive impression on the minds of guests.

## Mintawon and its Impression

Its comfortable single and double bedrooms that come with breakfast and other amenities make your stay at Mintawon an unforgettable experience. The rooms are in addition to 2-bedroom apartments and VIP facilities (nearing completion) with inclusive office spaces and verandas surrounded by a lush natural scenery. Mintawon has an eco-friendly solar power that provides 24/7 electricity and clean water. Its swimming pool (under construction) will be available to cool you off on hot days. It is mostly designed to offer an off-pool comfort for dates, couples and children among others.

## Mintawon Guests

Mintawon is built to meet the needs of all guests. Our staff are also trained to meet your demanding needs. Growing into a village, with additional facilities such as country-style huts with thatched roofs and wooden floors, Mintawon is an ideal place for the following:

- Tourist destination
- Event travelers
- Group travelers
- Holiday destination
- Business and luxury travelers
- Eco-Tourism, and many more

Mintawon Guesthouse provides the following services:

- Regular accommodation
- Retreats, workshops, and conference services
- Catering services
- Wedding ceremonies
- Honeymoon accommodations
- Holiday destination, and many more

## Dishes and Drinks

Mintawon offers both Liberian and international continental dishes. Its highly skilled Chefs have the expertise to prepare any food on demand. At Mintawon, there are a variety of drinks including wine, juices and beverages.

## Mintawon Village

Mintawon Village includes an eclectic collection of traditional Liberian huts and apartments. Some are mostly built, using local materials tailored to meet the needs of guests desiring more traditional settings for their stay. But the Mintawon Guesthouse, a commanding centerpiece, designed and built like a modern hotel anywhere in the world, is predominantly constructed with concrete, metal and steel. Together, the traditional-styled accommodations and the Guesthouse make Mintawon Village.

## Mintawon Stands Out

Mintawon is a responsive, quiet and a peaceful place. Time spent at Mintawon is always like a short stay! Aside from the comfort provided at Mintawon, there are exciting natural sceneries you can't afford to miss. The nearby Kpatawee Falls, the unpolluted natural air and the naturally cool evening breeze, including options to explore nature, make Mintawon to stand out. We at Mintawon add values to your expectations and create a host-guest connection that will forever live on. These footprints set us apart.

**Welcome to Mintawon!**

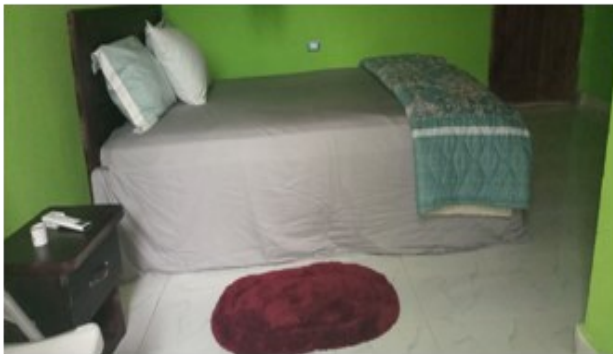
## BEDROOMS AT A GLANCE



Two persons to a room



Another bedroom view



A view of a single bedroom



Guesthouse Lobby



Cafeteria

## FOOD AND DRINKS



Continental Food



Liberian Dish



Juice

Wine

Beverages



African-styled Huts



Night View of Mintawon Village



Mintawon Greenfield